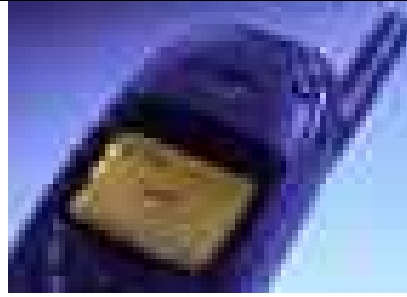


HSE Toolbox Talk

See HSE Web at <http://tcs-hse.bpweb.bp.com/> for more HSE Resources

Electrical Equipment: A Hot Work Hazard?



**Yes—unless
testing places
it in a safe
Category**

The policy on the use of electrically classified equipment states that “The use of pagers, cellular phones, flashlights, battery powered test equipment, and electronic photographic flash equipment is considered hot work unless this equipment carries the appropriate electrical classification.” The question is whether or not the equipment has the appropriate electrical classification. The problem is that most of the test equipment in common use throughout the site has never been tested for electrical classification. The Electrical Subcommittee of the Site Process Safety Committee has conducted an initial review of the common-use test equipment, and has determined which devices can be used without a hot work permit. The devices are grouped into one of the following categories:



Inherently Safe/ Authorized

These devices either pose no electrical threat, or based upon a functional review by the Electrical Subcommittee and past experience, these devices may be used without a hot work permit. Using these devices does not require a hot work permit or a hot work gas test.

Certification Required

These devices may not be used in an area covered by the hot work policy unless they have the proper electrical classification.

Hot Work Permit Required

These devices or functions have been evaluated. Using these devices or performing these functions requires a hot work permit.

Unknown/Hot Work Permit Required

These devices or functions have not been evaluated. Using these devices or performing these functions requires a hot work permit.

Gas Test Required

These devices or functions have been evaluated. Using these devices or performing these functions requires only a gas test.

A specific list of equipment that falls in the above categories can be found on the BPSH HSE Policies web ([PR-2B](#))

If equipment is not listed and there is a business need to use the equipment without a hot work permit, then a hot work hazard assessment may be performed using the appropriate form. The completed form must be submitted to the I&E Superintendent for evaluation and then forwarded to the HSE Department to update the list and file the form.